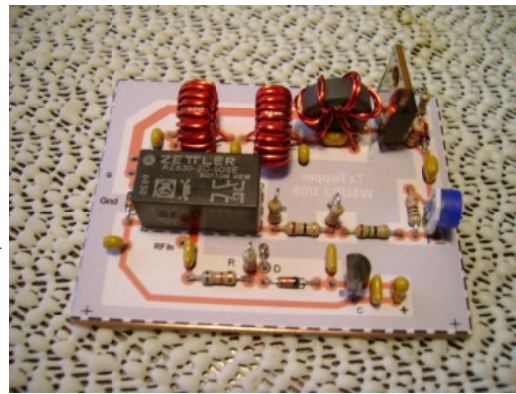
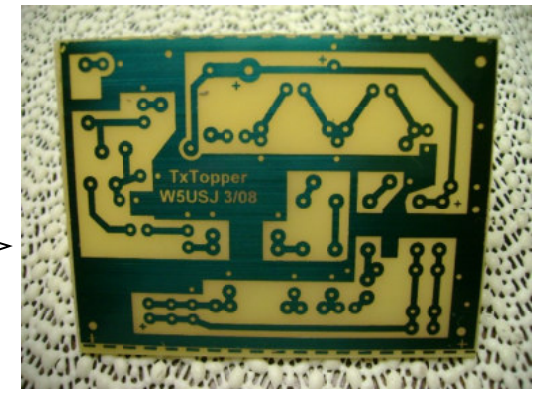


Developed Amp Circuit

Feb 2008



Mechanical Dwg. PCB Layout



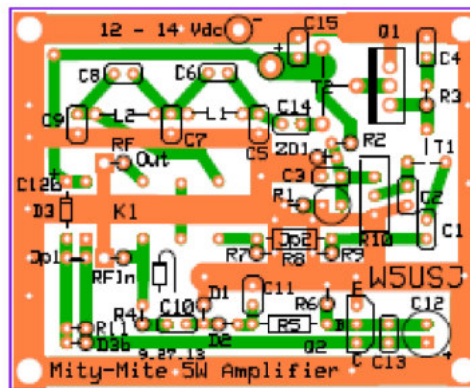
Home-brew PCB: "Photo" Process

For my own amazement...



First working 5W TxT Amplifier

Time
Passes



Learned Express PCB

Oct 2013



Not a Kit-USJ use only!

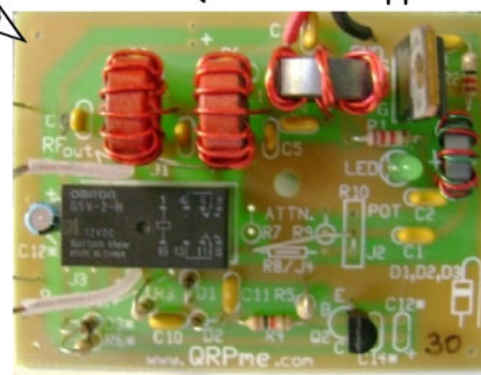
PCBs made with ExPCB Files

May 2008

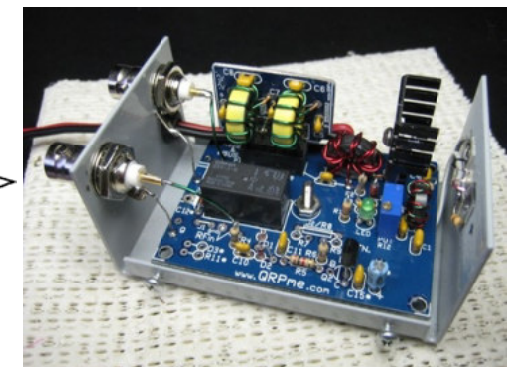
From First QRPme Tx Topper Kit



On the air stress test-success
May 2008



Cut from the Tuna Topper round board



LMB Crown Royal Enclosure

Brief Tx Topper Development in Pictures

By: W5USJ 18 Dec 2018